

# VPM's B.N.BANDODKAR COLLEGE OF SCIENCE (AUTONOMOUS), THANE

## DEPARTMENT OF PHYSICS

### 1.4.1 FEEDBACK ANALYSIS RELATED TO SYLLABUS 2022-23

#### STAKEHOLDERS

- STUDENTS - Current Students found M.Sc. part I and M.Sc. Part II Syllabi good with respect to almost all parameters.
- TEACHERS - Most of the Teachers marked all syllabi as good in many parameters but some teachers found MSc Part I as average with respect to suitability for job demands, employability, skill development and entrepreneurship.
- ALUMNI - Alumni generally praised all syllabi, but some alumni found SYBSc and TYBSc syllabi to be average in terms of meeting job demands, employability, and entrepreneurship needs.
- EMPLOYER - Employers emphasize the need for syllabus modifications to enhance alignment with job demands, employability, skill development, and entrepreneurship, reflecting a desire for curriculum adjustments to meet industry expectations.

### 1.4.2 ACTION PLAN REPORT RELATED TO FEEDBACK ANALYSIS OF SYLLABUS 2022-23

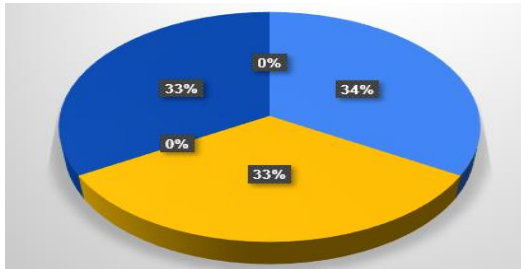
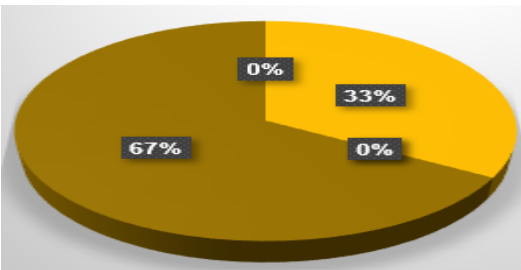
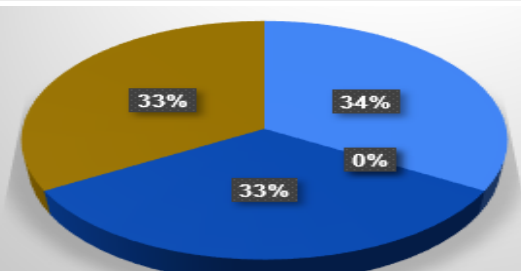
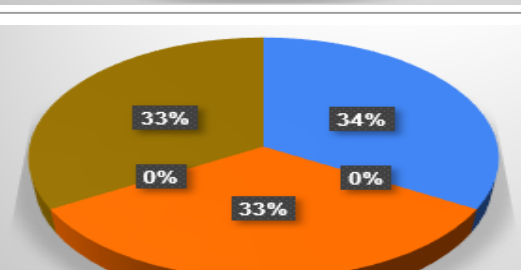
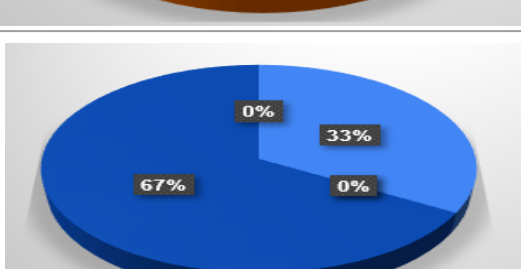
- In order to enhance job potential, newly introduced syllabi will be framed involving more skill based learning modules
- The lacuna is filled through guest lectures by eminent professors

  
I/C Principal



  
Head Dept. of Physics

# PG-Student's feedback related to Syllabus 2022-23

Parameter	MSc part 1	MSc part 2										
1.Design & Content of syllabus	NIL	 <table><caption>Data for Design &amp; Content of syllabus</caption><thead><tr><th>Category</th><th>Percentage</th></tr></thead><tbody><tr><td>Excellent</td><td>34%</td></tr><tr><td>Very Good</td><td>33%</td></tr><tr><td>Good</td><td>33%</td></tr><tr><td>Average &amp; Needs Improvement</td><td>0%</td></tr></tbody></table>	Category	Percentage	Excellent	34%	Very Good	33%	Good	33%	Average & Needs Improvement	0%
Category	Percentage											
Excellent	34%											
Very Good	33%											
Good	33%											
Average & Needs Improvement	0%											
2.Balance between Theory-Practical/ Tutorial	NIL	 <table><caption>Data for Balance between Theory-Practical/ Tutorial</caption><thead><tr><th>Category</th><th>Percentage</th></tr></thead><tbody><tr><td>Excellent</td><td>67%</td></tr><tr><td>Very Good</td><td>33%</td></tr><tr><td>Good</td><td>0%</td></tr><tr><td>Average &amp; Needs Improvement</td><td>0%</td></tr></tbody></table>	Category	Percentage	Excellent	67%	Very Good	33%	Good	0%	Average & Needs Improvement	0%
Category	Percentage											
Excellent	67%											
Very Good	33%											
Good	0%											
Average & Needs Improvement	0%											
3.Innovative-ness	NIL	 <table><caption>Data for Innovative-ness</caption><thead><tr><th>Category</th><th>Percentage</th></tr></thead><tbody><tr><td>Excellent</td><td>34%</td></tr><tr><td>Very Good</td><td>33%</td></tr><tr><td>Good</td><td>33%</td></tr><tr><td>Average &amp; Needs Improvement</td><td>0%</td></tr></tbody></table>	Category	Percentage	Excellent	34%	Very Good	33%	Good	33%	Average & Needs Improvement	0%
Category	Percentage											
Excellent	34%											
Very Good	33%											
Good	33%											
Average & Needs Improvement	0%											
4. Knowledge Acquired	NIL	 <table><caption>Data for Knowledge Acquired</caption><thead><tr><th>Category</th><th>Percentage</th></tr></thead><tbody><tr><td>Excellent</td><td>34%</td></tr><tr><td>Very Good</td><td>33%</td></tr><tr><td>Good</td><td>33%</td></tr><tr><td>Average &amp; Needs Improvement</td><td>0%</td></tr></tbody></table>	Category	Percentage	Excellent	34%	Very Good	33%	Good	33%	Average & Needs Improvement	0%
Category	Percentage											
Excellent	34%											
Very Good	33%											
Good	33%											
Average & Needs Improvement	0%											
5. Useful for career	NIL	 <table><caption>Data for Useful for career</caption><thead><tr><th>Category</th><th>Percentage</th></tr></thead><tbody><tr><td>Excellent</td><td>67%</td></tr><tr><td>Very Good</td><td>33%</td></tr><tr><td>Good</td><td>0%</td></tr><tr><td>Average &amp; Needs Improvement</td><td>0%</td></tr></tbody></table>	Category	Percentage	Excellent	67%	Very Good	33%	Good	0%	Average & Needs Improvement	0%
Category	Percentage											
Excellent	67%											
Very Good	33%											
Good	0%											
Average & Needs Improvement	0%											
6. Significant suggestions	NIL	NIL										

Key : **Excellent** , **Very Good** , **Good** , **Average** & **Needs Improvement**

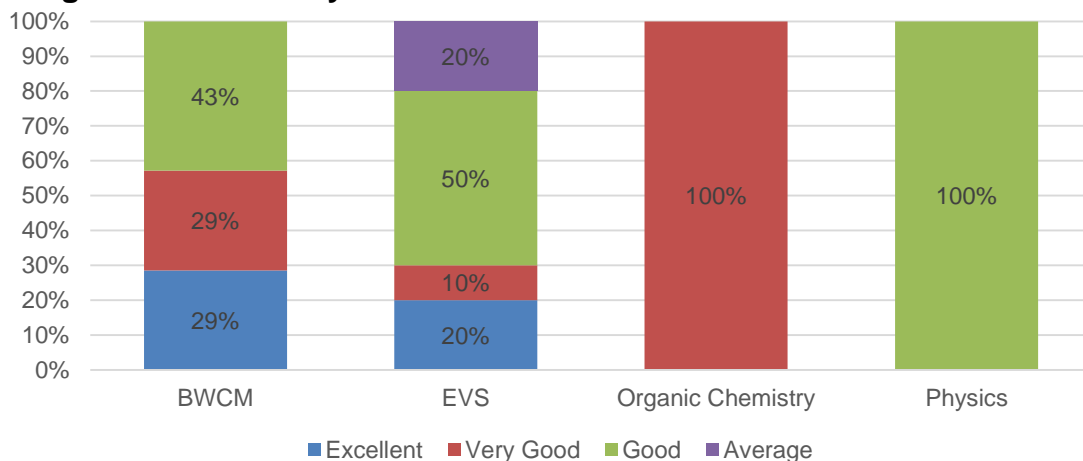
# PG-Teacher's feedback related to Syllabus 2022-23

Parameter	MSc part 1	MSc part 2
1. Design & Content of syllabus		
2. Availability of Sufficient References		
3. Suitability for setting question paper		
4. Suitability for both slow & fast learners		
5.Suitability for employability/ entrepreneurship/ skill development		
6. Significant suggestions	some reference book not available and previous year question papers	NIL

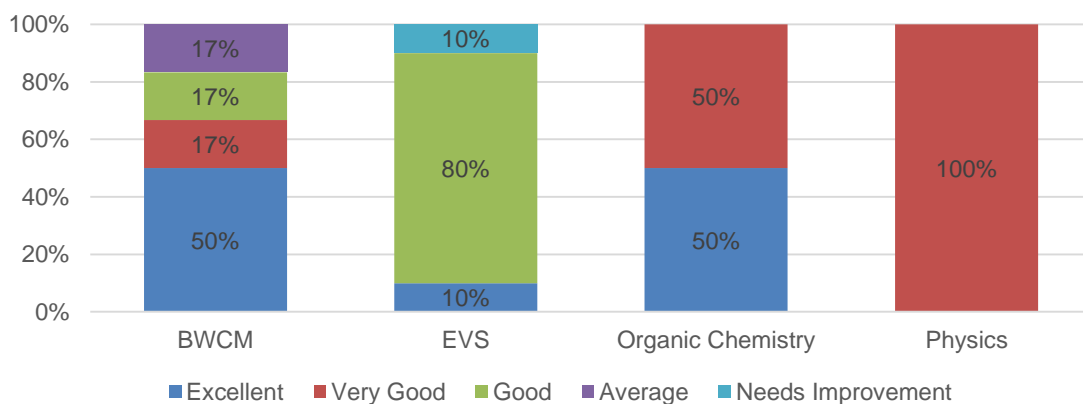
Key : Excellent , Very Good, Good, Average & Needs Improvement

# PG-Alumni feedback related to Syllabus 2022-23

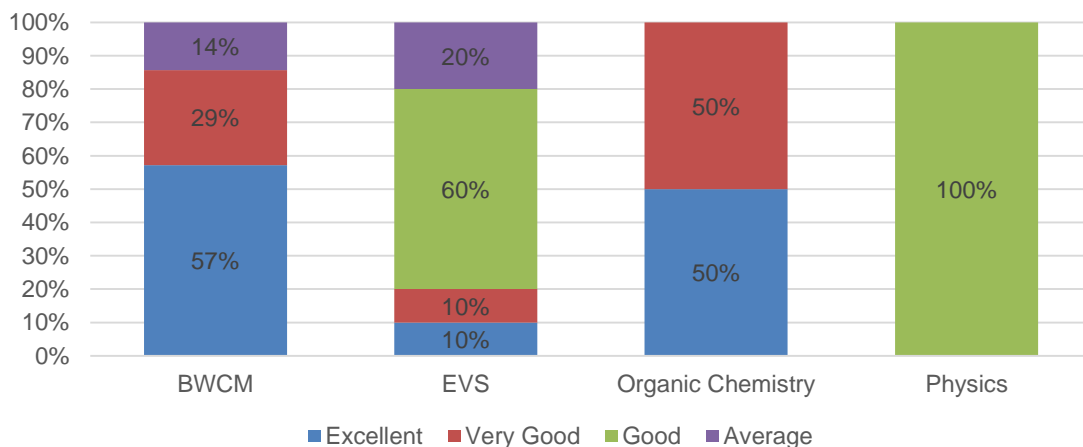
## 1.Design & Content of syllabus



## 2. Innovativeness in syllabus



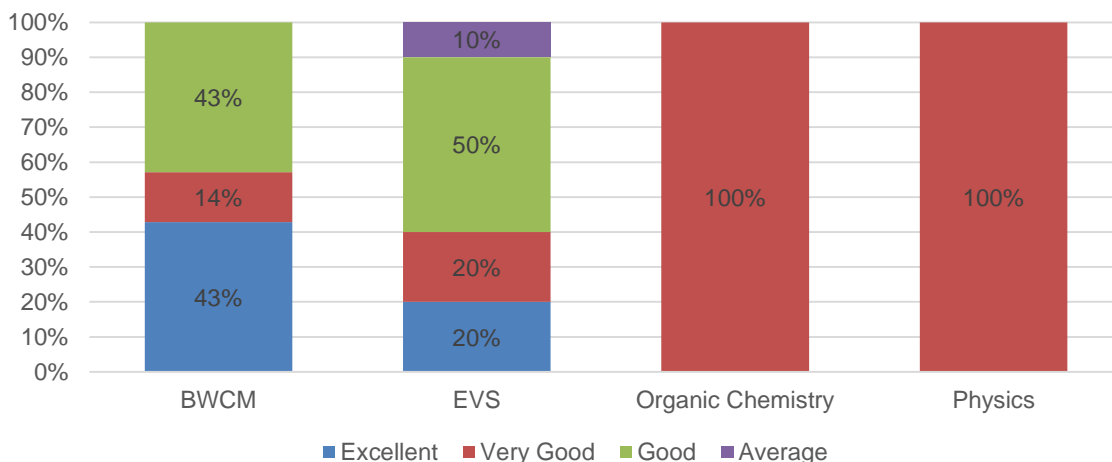
## 3. Knowledge Acquired through syllabus



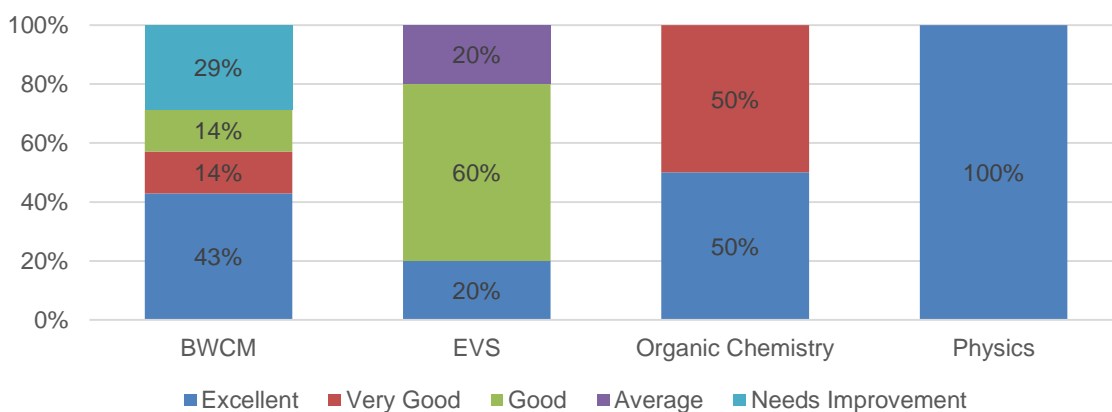
Key - Excellent, Very Good, Good, Average & Needs Improvement

# PG-Alumni feedback related to Syllabus 2022-23

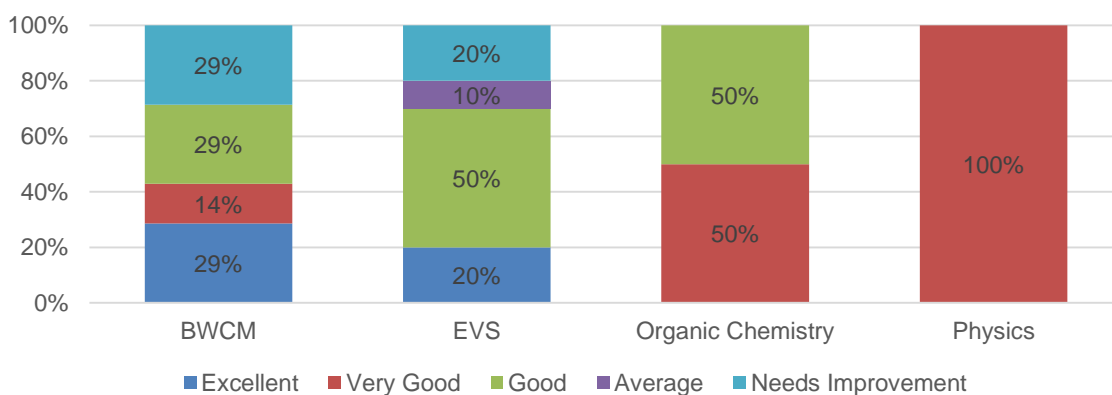
## 4. Topics on environmental sustainability, gender equality, human values and professional ethics



## 5. Suitability for developing employability/ entrepreneurship/ skill development



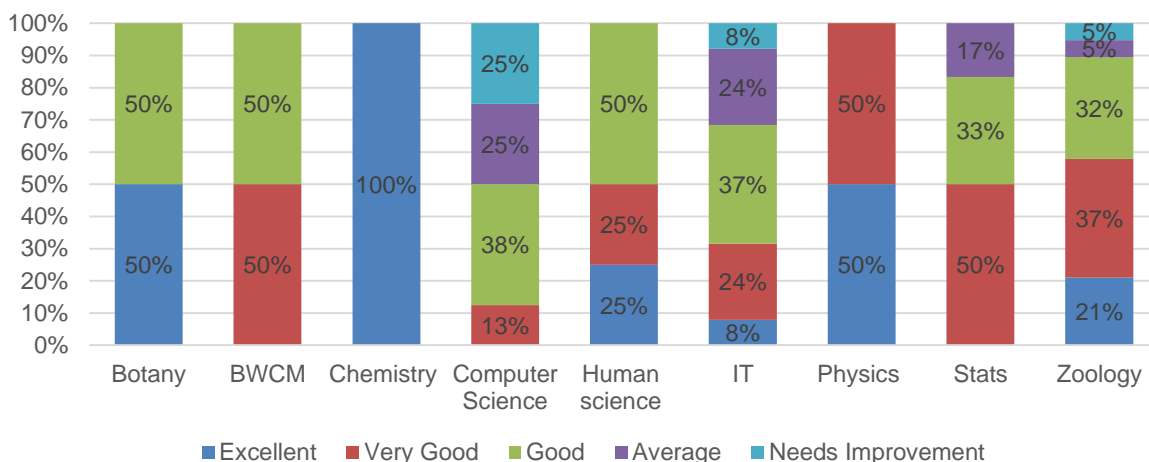
## 6. Suitability for local needs/ job demands



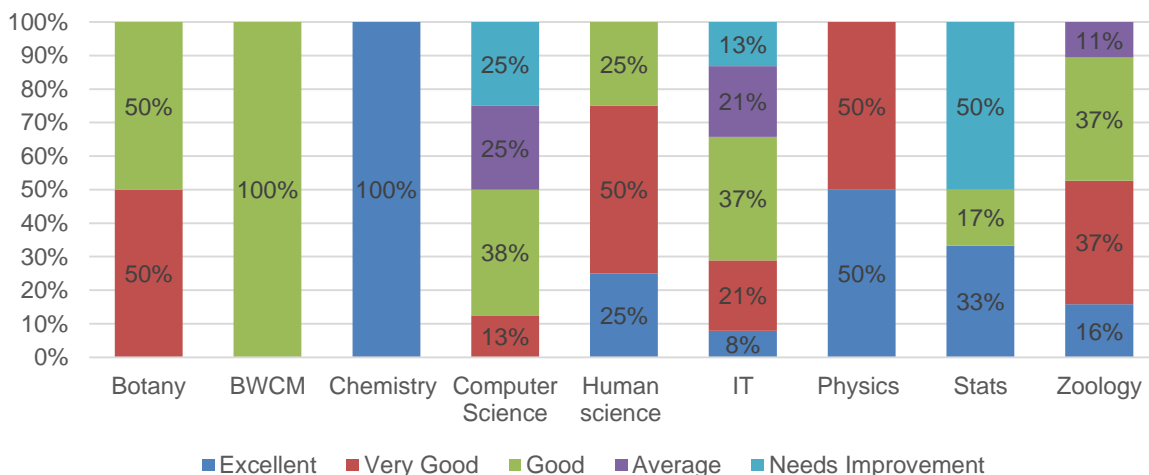
Key - Excellent, Very Good, Good, Average & Needs Improvement

# Employer's feedback related to Syllabus 2022-23

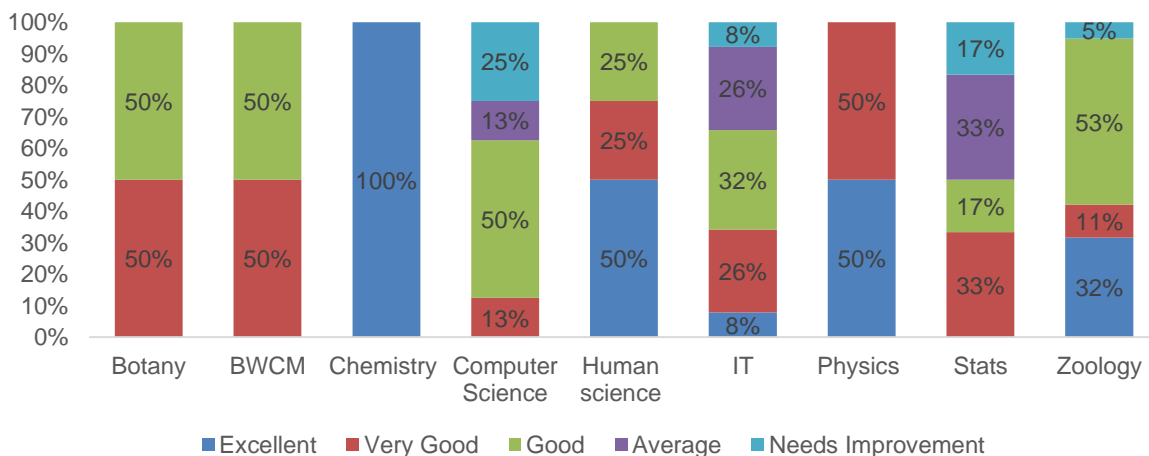
## 1.Design & Content of syllabus



## 2. Compatibility in procuring employment/ entrepreneurship



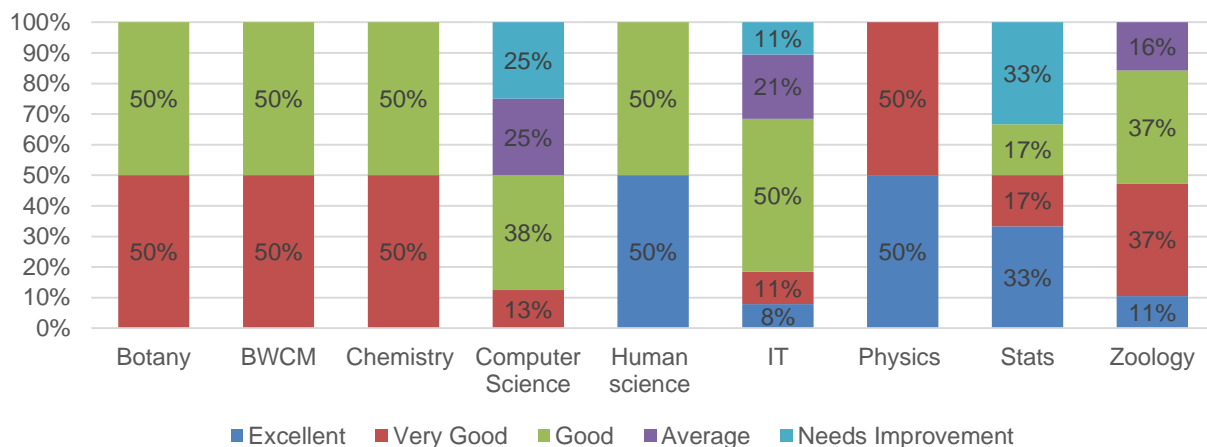
## 3. Compatibility in procuring skill development



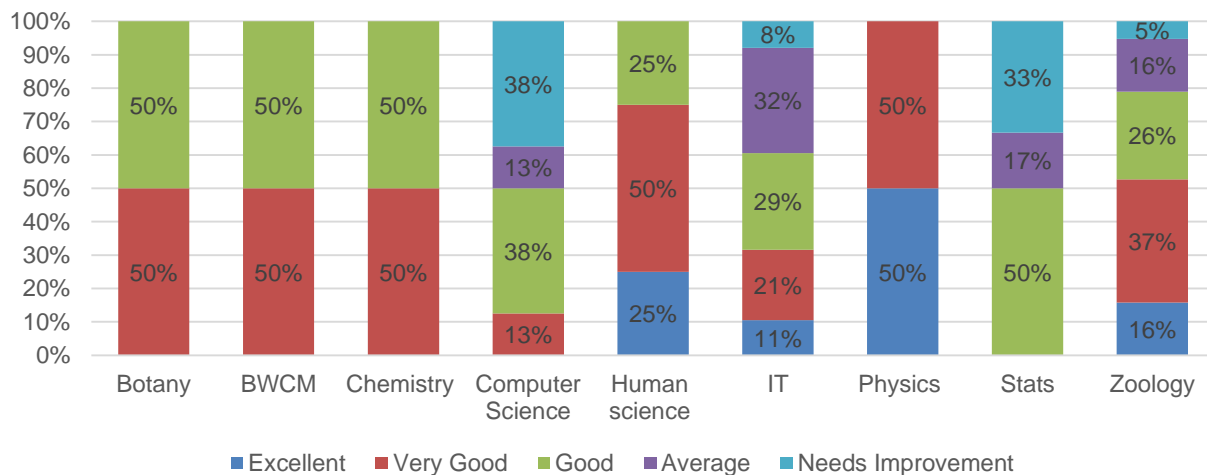
Key - Excellent, Very Good, Good, Average & Needs Improvement

# Employer's feedback related to Syllabus 2022-23

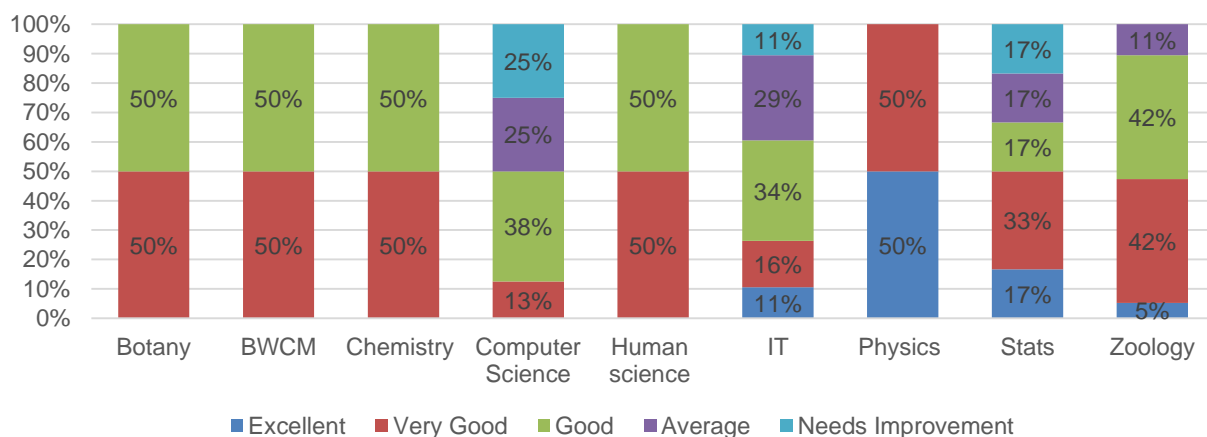
## 4. Incorporation of industry relevant topics



## 5. Incorporation of recent advancements



## 6. Useful for proficiency



Key - Excellent, Very Good, Good, Average & Needs Improvement