

VPM's B.N.BANDODKAR COLLEGE OF SCIENCE (AUTONOMOUS), THANE

DEPARTMENT OF CHEMISTRY

1.4.1 FEEDBACK ANALYSIS REPORT TO SYLLABUS 2022-23

STAKEHOLDERS

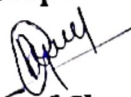
- STUDENTS - Current Students found MSc part I and M.Sc. Part II Syllabi are very good with respect to employments and industrial exposure.
- TEACHERS - Most of the Teachers marked all syllabi as excellent in many parameters but some teachers found MSc Part I as very good with respect to suitability for job demands, employability, skill development and entrepreneurship.
- ALUMNI- The valuable and suggestions from the Alumni was more job oriented courses can be introduced and mapped as syllabus.
- EMPLOYER- Most of the employers marked all syllabi as very good in most parameters.

1.4.2 ACTION PLAN REPORT RELATED TO FEEDBACK ANALYSIS OF SYLLABUS 2022-23

- Department of Chemistry involves potential points in syllabus In order to enhance job potential, newly introduced syllabi and will be framed involving more skill based learning modules
- Novel certificate course/s will be initiated by the Department with entrepreneurship perspective.


I/C Principal




Head Dept. of Chemistry

PG-Student's feedback related to Syllabus 2022-23

Parameter	MSc part 1	MSc part 2
1.Design & Content of syllabus	<p>■ 1 ■ 2 ■ 3 ■ 4 ■ 5</p>	<p>■ 1 ■ 2 ■ 3 ■ 4 ■ 5</p>
2.Balance between Theory-Practical/ Tutorial	<p>■ 1 ■ 2 ■ 3 ■ 4 ■ 5</p>	<p>■ 1 ■ 2 ■ 3 ■ 4 ■ 5</p>
3.Innovative-ness	<p>■ 1 ■ 2 ■ 3 ■ 4 ■ 5</p>	<p>■ 1 ■ 2 ■ 3 ■ 4 ■ 5</p>
4. Knowledge Acquired	<p>■ 1 ■ 2 ■ 3 ■ 4 ■ 5</p>	<p>■ 1 ■ 2 ■ 3 ■ 4 ■ 5</p>
5. Useful for career	<p>■ 1 ■ 2 ■ 3 ■ 4 ■ 5</p>	<p>■ 1 ■ 2 ■ 3 ■ 4 ■ 5</p>
6. Significant suggestions	NIL	

Key -



PG-Teacher's feedback related to Syllabus 2022-23

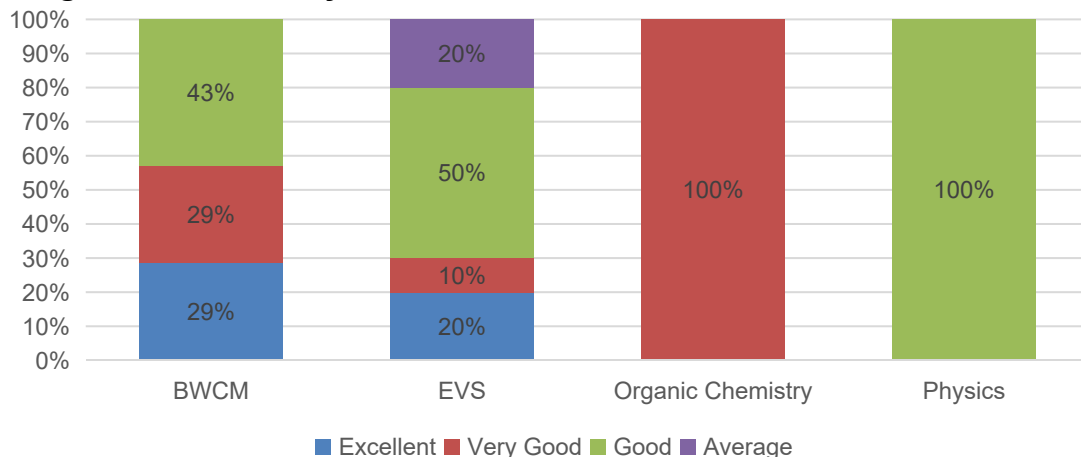
Parameter	MSc part 1	MSc part 2
1. Design & Content of syllabus	<p>0</p> <p>4</p> <p>■ 1 ■ 2 ■ 3 ■ 4 ■ 5</p>	<p>0</p> <p>4</p> <p>■ 1 ■ 2 ■ 3 ■ 4 ■ 5</p>
2. Availability of Sufficient References	<p>0</p> <p>4</p> <p>■ 1 ■ 2 ■ 3 ■ 4 ■ 5</p>	<p>0</p> <p>4</p> <p>■ 1 ■ 2 ■ 3 ■ 4 ■ 5</p>
3. Suitability for setting question paper	<p>0</p> <p>4</p> <p>■ 1 ■ 2</p>	<p>0</p> <p>4</p> <p>■ 1 ■ 2 ■ 3 ■ 4 ■ 5</p>
4. Suitability for both slow & fast learners	<p>0</p> <p>4</p> <p>■ 1 ■ 2 ■ 3 ■ 4 ■ 5</p>	<p>0</p> <p>4</p> <p>■ 1 ■ 2 ■ 3 ■ 4 ■ 5</p>
5. Suitability for employability/ entrepreneurship/ skill development	<p>0</p> <p>4</p> <p>■ 1 ■ 2 ■ 3 ■ 4 ■ 5</p>	<p>0</p> <p>4</p> <p>■ 1 ■ 2 ■ 3 ■ 4 ■ 5</p>
6. Significant suggestions	NIL	NIL

Key -

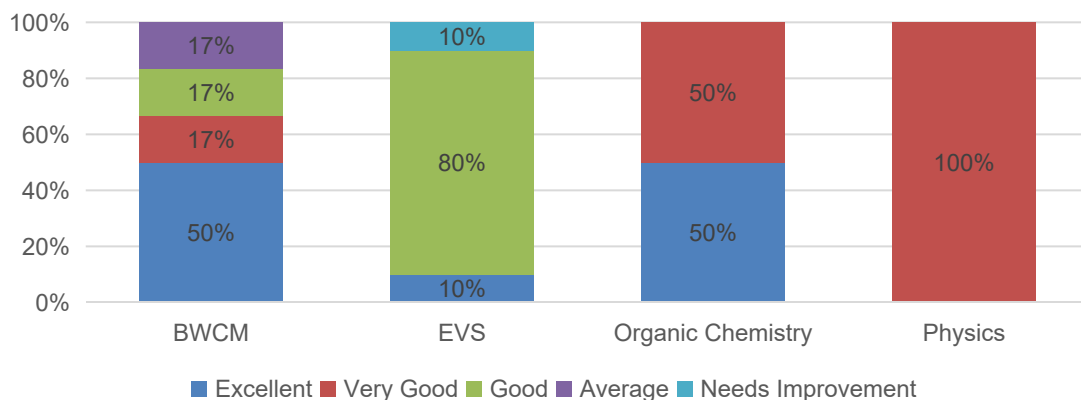


PG-Alumni feedback related to Syllabus 2022-23

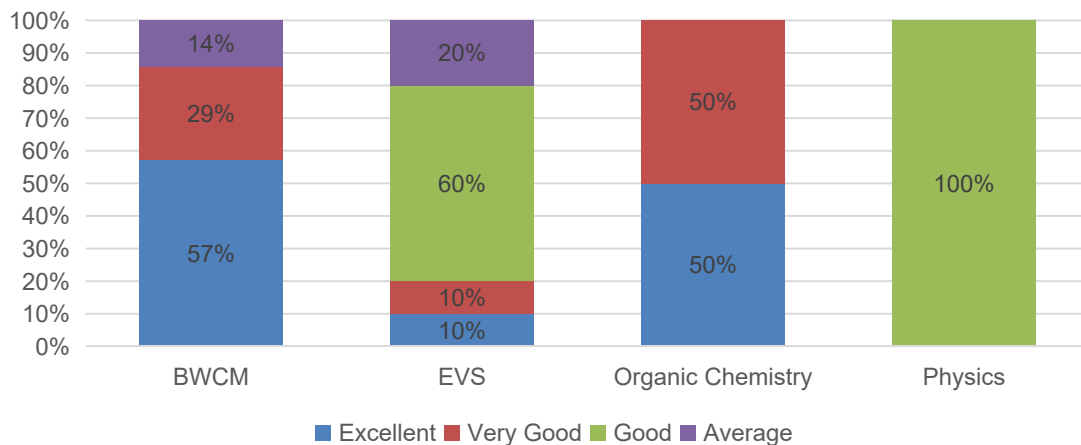
1.Design & Content of syllabus



2. Innovativeness in syllabus



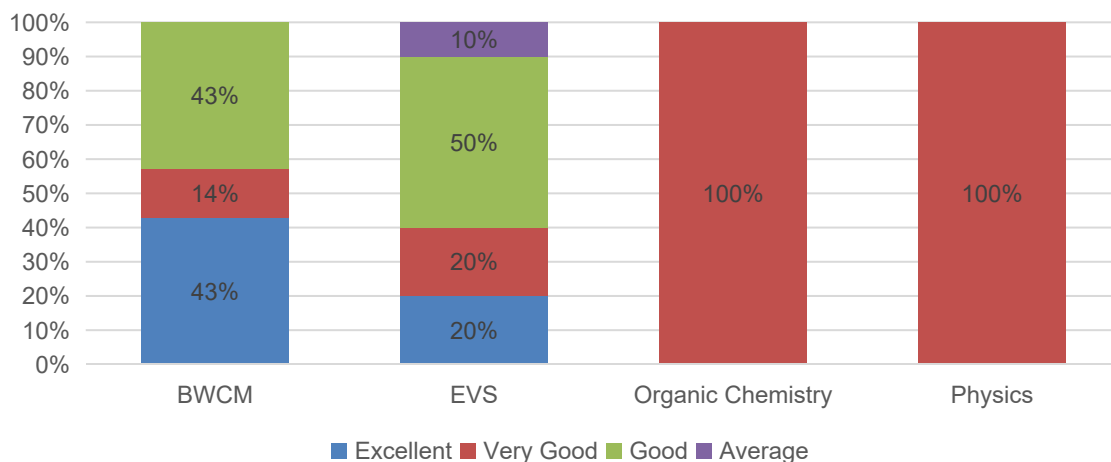
3. Knowledge Acquired through syllabus



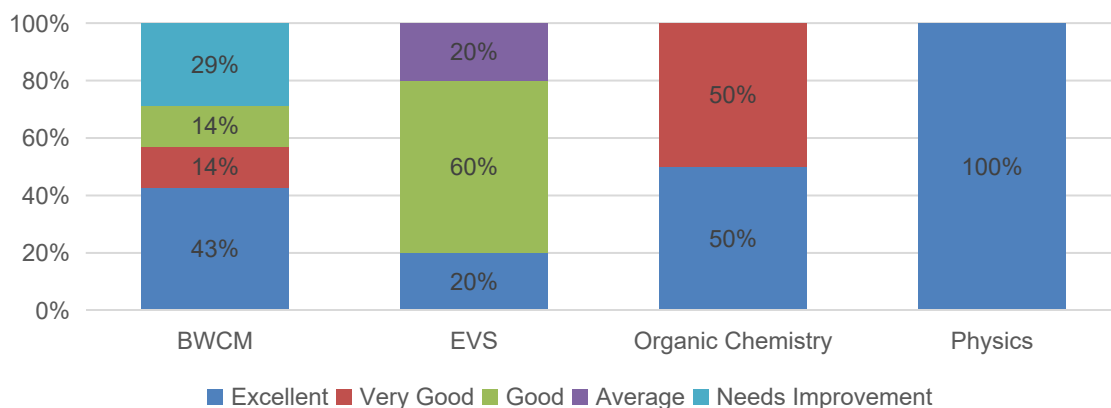
Key - Excellent, Very Good, Good, Average & Needs Improvement

PG-Alumni feedback related to Syllabus 2022-23

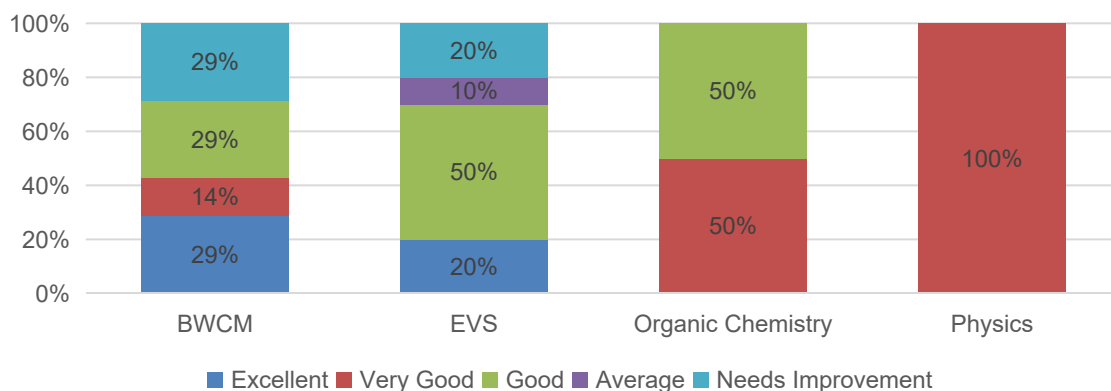
4. Topics on environmental sustainability, gender equality, human values and professional ethics



5. Suitability for developing employability/ entrepreneurship/ skill development



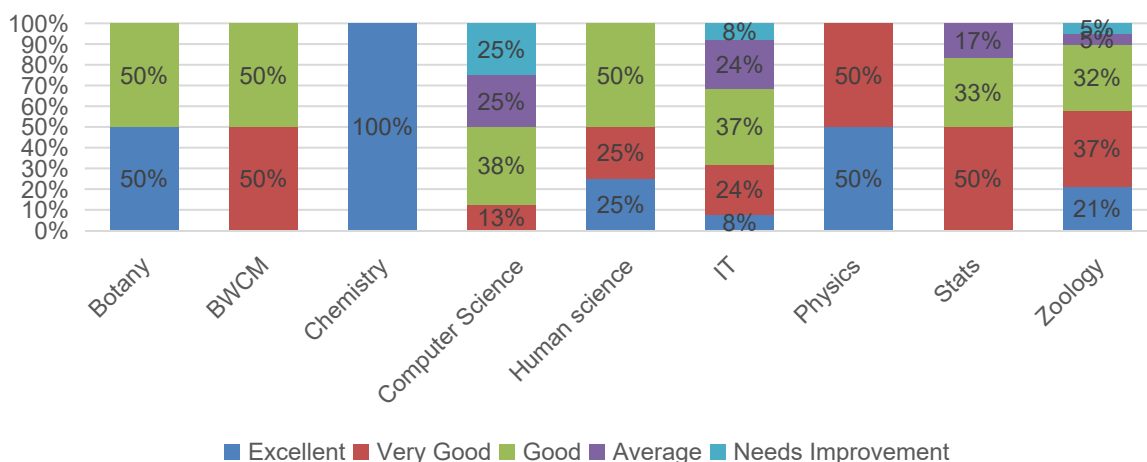
6. Suitability for local needs/ job demands



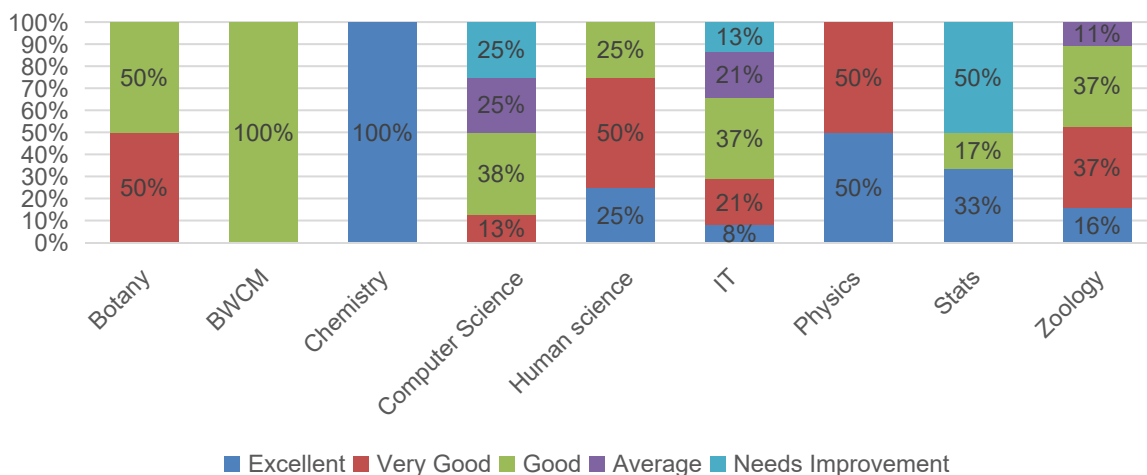
Key - Excellent, Very Good, Good, Average & Needs Improvement

Employer's feedback related to Syllabus 2022-23

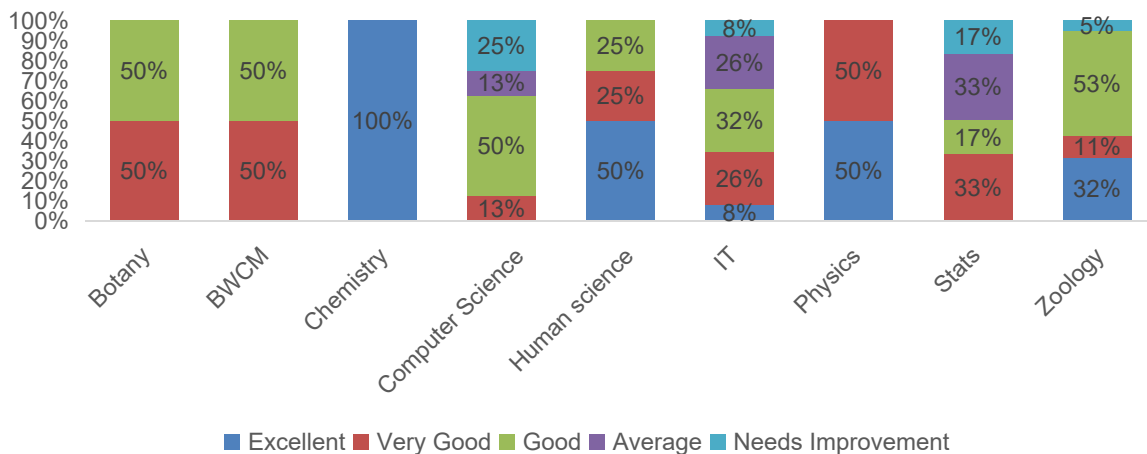
1.Design & Content of syllabus



2. Compatibility in procuring employment/ entrepreneurship



3. Compatibility in procuring skill development



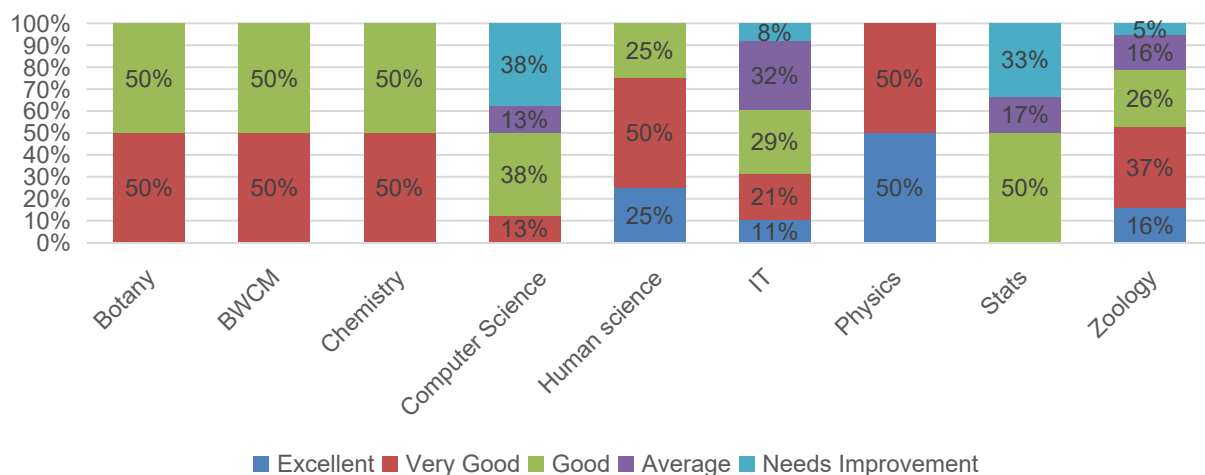
Key - Excellent, Very Good, Good, Average & Needs Improvement

Employer's feedback related to Syllabus 2022-23

4. Incorporation of industry relevant topics



5. Incorporation of recent advancements



6. Useful for proficiency



Key - Excellent, Very Good, Good, Average & Needs Improvement