

VPM's B.N.BANDODKAR COLLEGE OF SCIENCE (AUTONOMOUS), THANE

DEPARTMENT OF INFORMATION TECHNOLOGY (IT)

1.4.1 FEEDBACK ANALYSIS RELATED TO SYLLABUS 2022-23

STAKEHOLDERS

- **STUDENTS** - Current Students found M.Sc part I and M.Sc. Part II Syllabi good with respect to almost all parameters.
- **TEACHERS** - Most of the Teachers marked all syllabi as very good in many parameters.
- **ALUMNI** - Nil
- **EMPLOYER** - Many employers expressed need to improve syllabi with respect to almost all parameters

1.4.2 ACTION PLAN REPORT RELATED TO FEEDBACK ANALYSIS OF SYLLABUS 2022-23

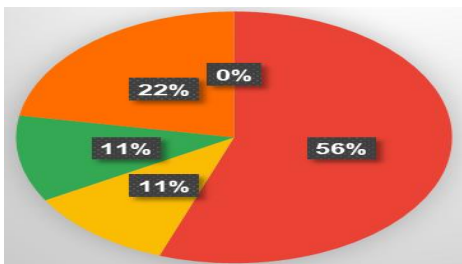
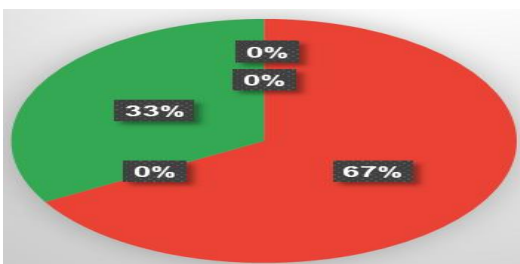
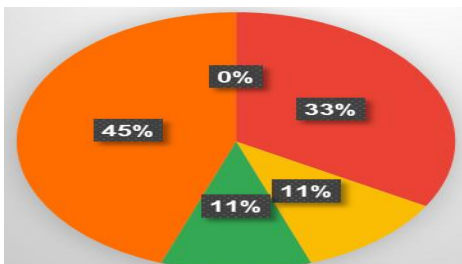
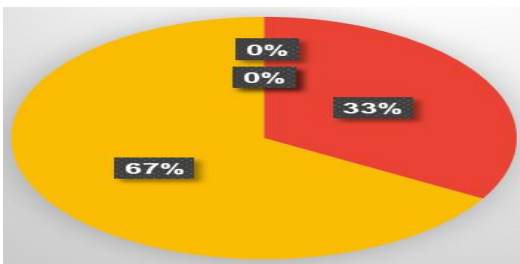
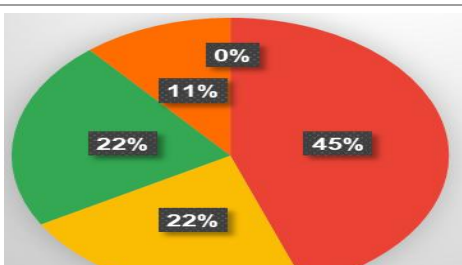
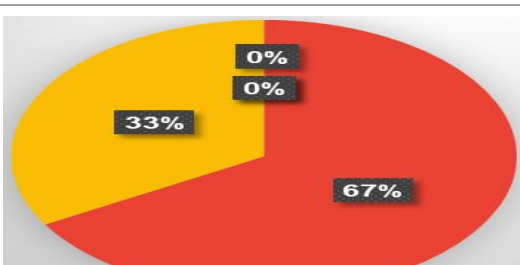
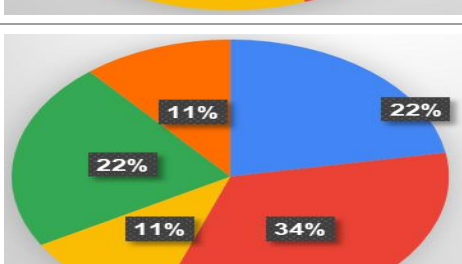
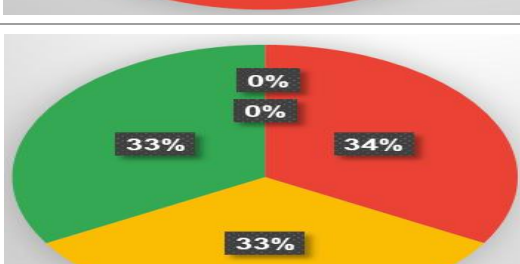
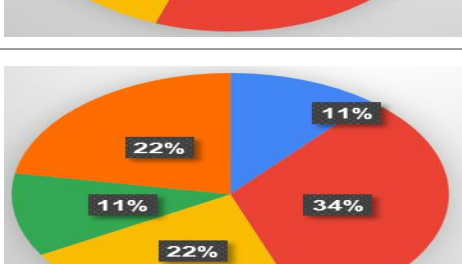
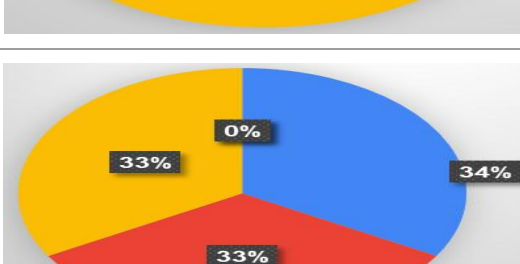
- In order to enhance job potential, newly introduced syllabi will be framed involving more skill based learning modules.


I/C Principal



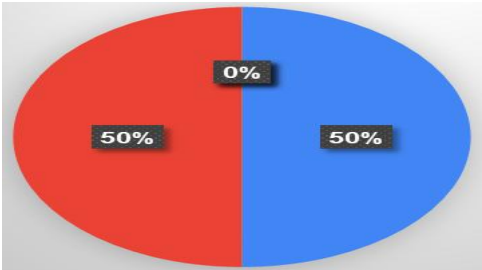
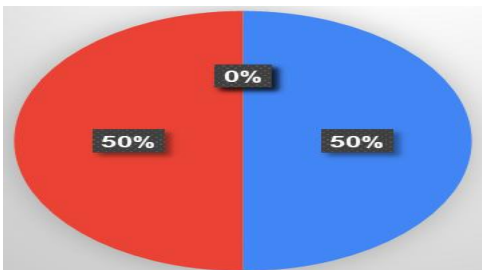
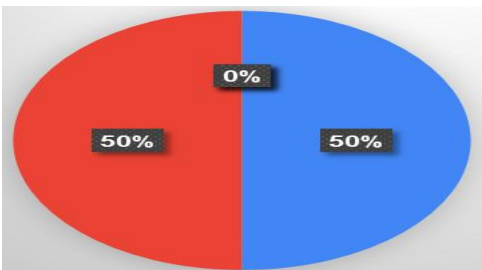
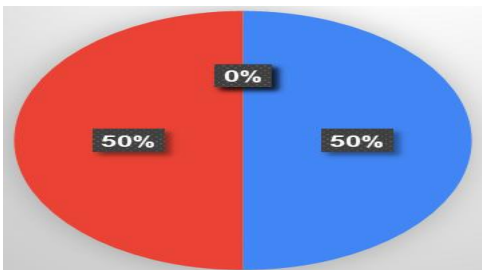
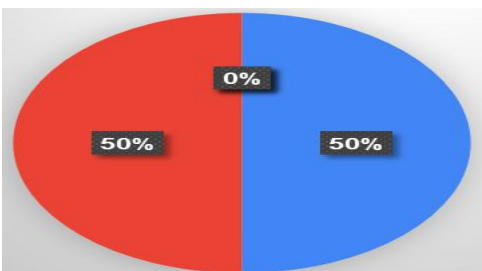
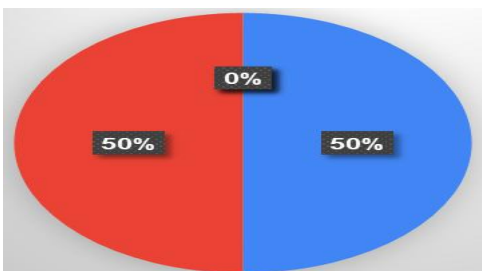
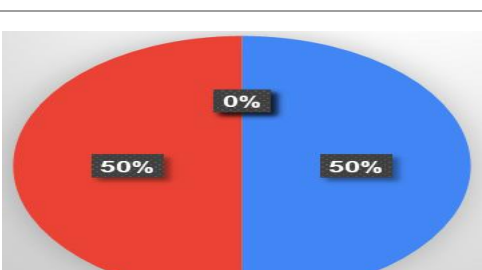
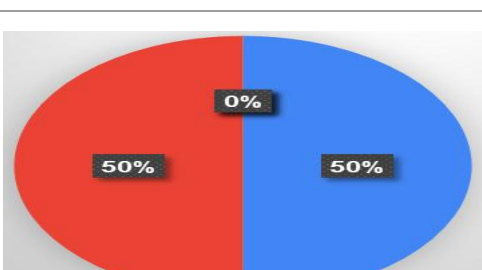
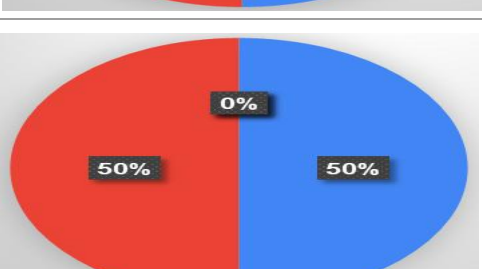
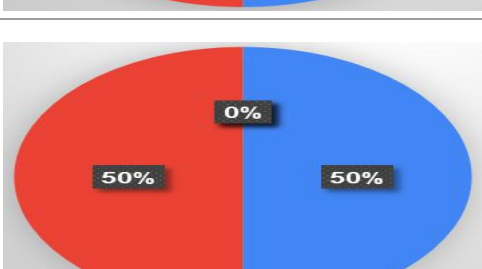

Coordinator Dept. of IT

PG-Student's feedback related to Syllabus 2022-23

Parameter	MSc part 1	MSc part 2																								
1.Design & Content of syllabus	 <table><tr><th>Category</th><th>Percentage</th></tr><tr><td>Excellent</td><td>0%</td></tr><tr><td>Very Good</td><td>56%</td></tr><tr><td>Good</td><td>22%</td></tr><tr><td>Average</td><td>11%</td></tr><tr><td>Needs Improvement</td><td>11%</td></tr></table>	Category	Percentage	Excellent	0%	Very Good	56%	Good	22%	Average	11%	Needs Improvement	11%	 <table><tr><th>Category</th><th>Percentage</th></tr><tr><td>Excellent</td><td>0%</td></tr><tr><td>Very Good</td><td>67%</td></tr><tr><td>Good</td><td>33%</td></tr><tr><td>Average</td><td>0%</td></tr><tr><td>Needs Improvement</td><td>0%</td></tr></table>	Category	Percentage	Excellent	0%	Very Good	67%	Good	33%	Average	0%	Needs Improvement	0%
Category	Percentage																									
Excellent	0%																									
Very Good	56%																									
Good	22%																									
Average	11%																									
Needs Improvement	11%																									
Category	Percentage																									
Excellent	0%																									
Very Good	67%																									
Good	33%																									
Average	0%																									
Needs Improvement	0%																									
2.Balance between Theory-Practical/ Tutorial	 <table><tr><th>Category</th><th>Percentage</th></tr><tr><td>Excellent</td><td>0%</td></tr><tr><td>Very Good</td><td>33%</td></tr><tr><td>Good</td><td>45%</td></tr><tr><td>Average</td><td>11%</td></tr><tr><td>Needs Improvement</td><td>11%</td></tr></table>	Category	Percentage	Excellent	0%	Very Good	33%	Good	45%	Average	11%	Needs Improvement	11%	 <table><tr><th>Category</th><th>Percentage</th></tr><tr><td>Excellent</td><td>0%</td></tr><tr><td>Very Good</td><td>33%</td></tr><tr><td>Good</td><td>67%</td></tr><tr><td>Average</td><td>0%</td></tr><tr><td>Needs Improvement</td><td>0%</td></tr></table>	Category	Percentage	Excellent	0%	Very Good	33%	Good	67%	Average	0%	Needs Improvement	0%
Category	Percentage																									
Excellent	0%																									
Very Good	33%																									
Good	45%																									
Average	11%																									
Needs Improvement	11%																									
Category	Percentage																									
Excellent	0%																									
Very Good	33%																									
Good	67%																									
Average	0%																									
Needs Improvement	0%																									
3.Innovative-ness	 <table><tr><th>Category</th><th>Percentage</th></tr><tr><td>Excellent</td><td>0%</td></tr><tr><td>Very Good</td><td>45%</td></tr><tr><td>Good</td><td>22%</td></tr><tr><td>Average</td><td>22%</td></tr><tr><td>Needs Improvement</td><td>11%</td></tr></table>	Category	Percentage	Excellent	0%	Very Good	45%	Good	22%	Average	22%	Needs Improvement	11%	 <table><tr><th>Category</th><th>Percentage</th></tr><tr><td>Excellent</td><td>0%</td></tr><tr><td>Very Good</td><td>67%</td></tr><tr><td>Good</td><td>33%</td></tr><tr><td>Average</td><td>0%</td></tr><tr><td>Needs Improvement</td><td>0%</td></tr></table>	Category	Percentage	Excellent	0%	Very Good	67%	Good	33%	Average	0%	Needs Improvement	0%
Category	Percentage																									
Excellent	0%																									
Very Good	45%																									
Good	22%																									
Average	22%																									
Needs Improvement	11%																									
Category	Percentage																									
Excellent	0%																									
Very Good	67%																									
Good	33%																									
Average	0%																									
Needs Improvement	0%																									
4. Knowledge Acquired	 <table><tr><th>Category</th><th>Percentage</th></tr><tr><td>Excellent</td><td>22%</td></tr><tr><td>Very Good</td><td>34%</td></tr><tr><td>Good</td><td>22%</td></tr><tr><td>Average</td><td>11%</td></tr><tr><td>Needs Improvement</td><td>11%</td></tr></table>	Category	Percentage	Excellent	22%	Very Good	34%	Good	22%	Average	11%	Needs Improvement	11%	 <table><tr><th>Category</th><th>Percentage</th></tr><tr><td>Excellent</td><td>0%</td></tr><tr><td>Very Good</td><td>34%</td></tr><tr><td>Good</td><td>33%</td></tr><tr><td>Average</td><td>33%</td></tr><tr><td>Needs Improvement</td><td>0%</td></tr></table>	Category	Percentage	Excellent	0%	Very Good	34%	Good	33%	Average	33%	Needs Improvement	0%
Category	Percentage																									
Excellent	22%																									
Very Good	34%																									
Good	22%																									
Average	11%																									
Needs Improvement	11%																									
Category	Percentage																									
Excellent	0%																									
Very Good	34%																									
Good	33%																									
Average	33%																									
Needs Improvement	0%																									
5. Useful for career	 <table><tr><th>Category</th><th>Percentage</th></tr><tr><td>Excellent</td><td>11%</td></tr><tr><td>Very Good</td><td>34%</td></tr><tr><td>Good</td><td>22%</td></tr><tr><td>Average</td><td>11%</td></tr><tr><td>Needs Improvement</td><td>22%</td></tr></table>	Category	Percentage	Excellent	11%	Very Good	34%	Good	22%	Average	11%	Needs Improvement	22%	 <table><tr><th>Category</th><th>Percentage</th></tr><tr><td>Excellent</td><td>34%</td></tr><tr><td>Very Good</td><td>33%</td></tr><tr><td>Good</td><td>33%</td></tr><tr><td>Average</td><td>0%</td></tr><tr><td>Needs Improvement</td><td>0%</td></tr></table>	Category	Percentage	Excellent	34%	Very Good	33%	Good	33%	Average	0%	Needs Improvement	0%
Category	Percentage																									
Excellent	11%																									
Very Good	34%																									
Good	22%																									
Average	11%																									
Needs Improvement	22%																									
Category	Percentage																									
Excellent	34%																									
Very Good	33%																									
Good	33%																									
Average	0%																									
Needs Improvement	0%																									
6. Significant suggestions	Real time based Practical are required.	NIL																								

Key - Excellent, Very Good, Good, Average & Needs Improvement

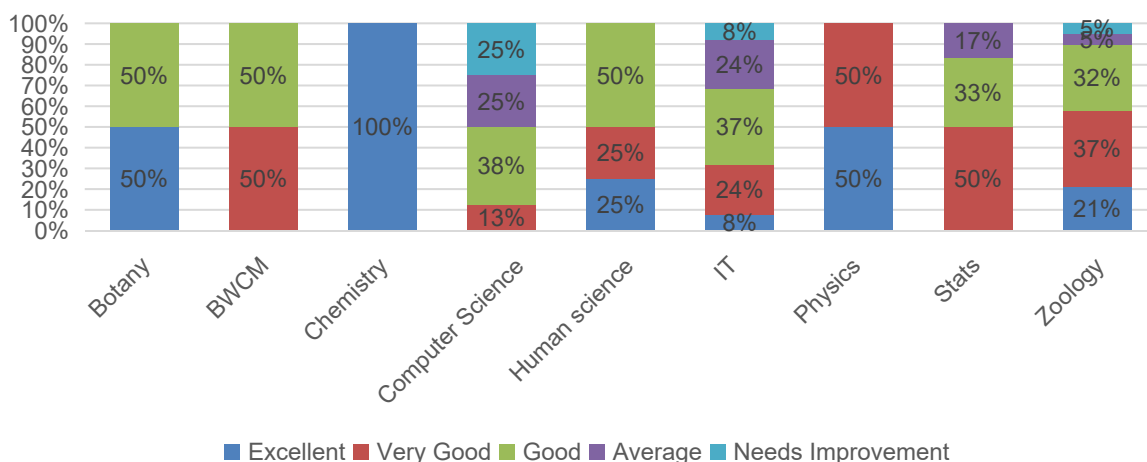
PG-Teacher's feedback related to Syllabus 2022-23

Parameter	MSc part 1	MSc part 2
1. Design & Content of syllabus		
2. Availability of Sufficient References		
3. Suitability for setting question paper		
4. Suitability for both slow & fast learners		
5. Suitability for employability/ entrepreneurship/ skill development		
6. Significant suggestions	NIL	NIL

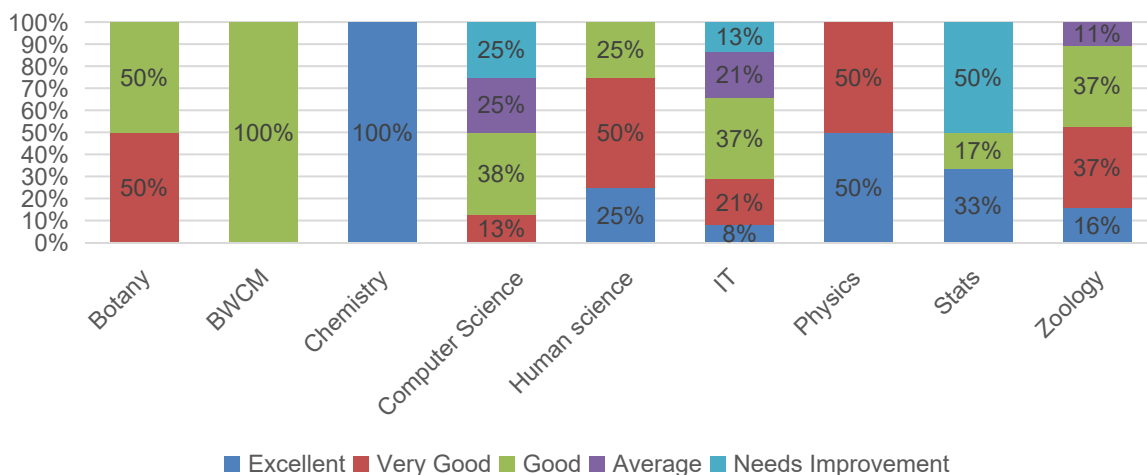
Key - Excellent, Very Good, Good, Average & Needs Improvement

Employer's feedback related to Syllabus 2022-23

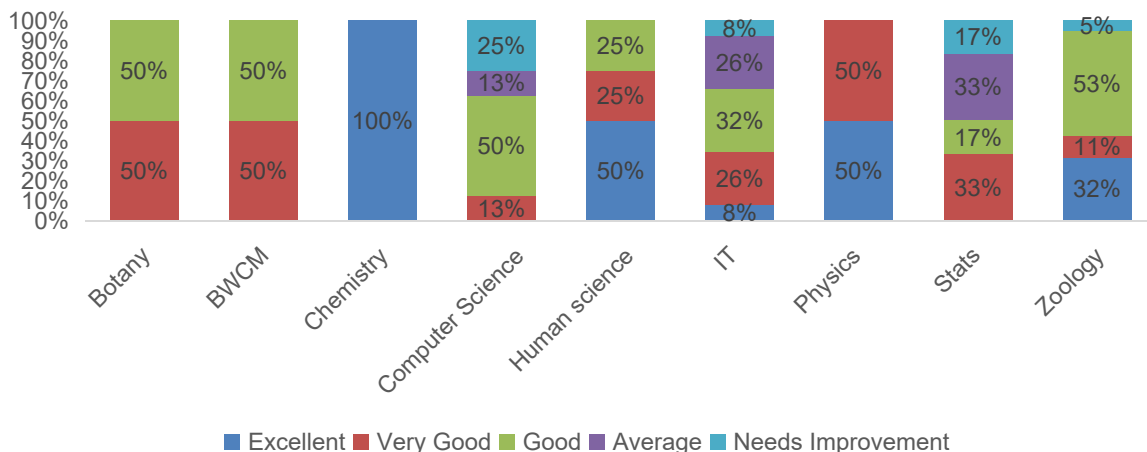
1.Design & Content of syllabus



2. Compatibility in procuring employment/ entrepreneurship



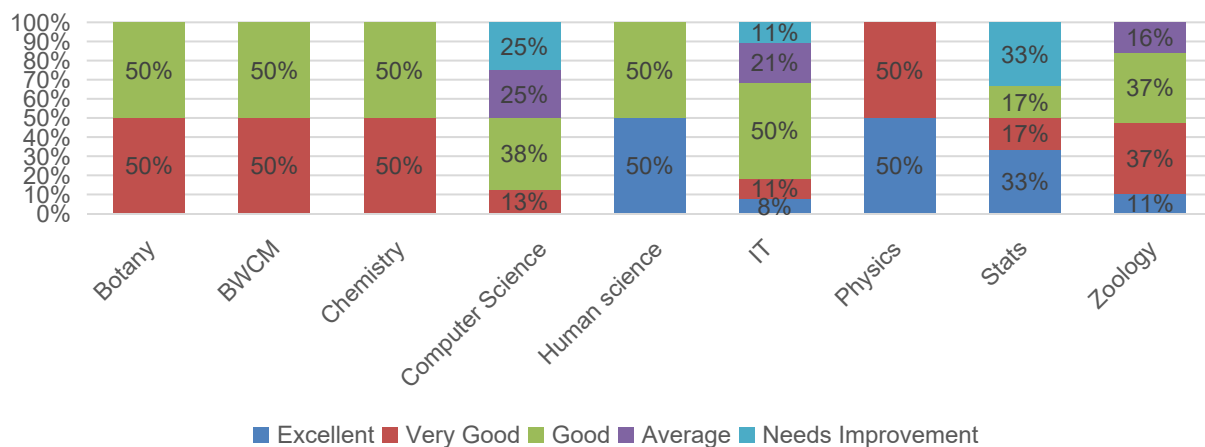
3. Compatibility in procuring skill development



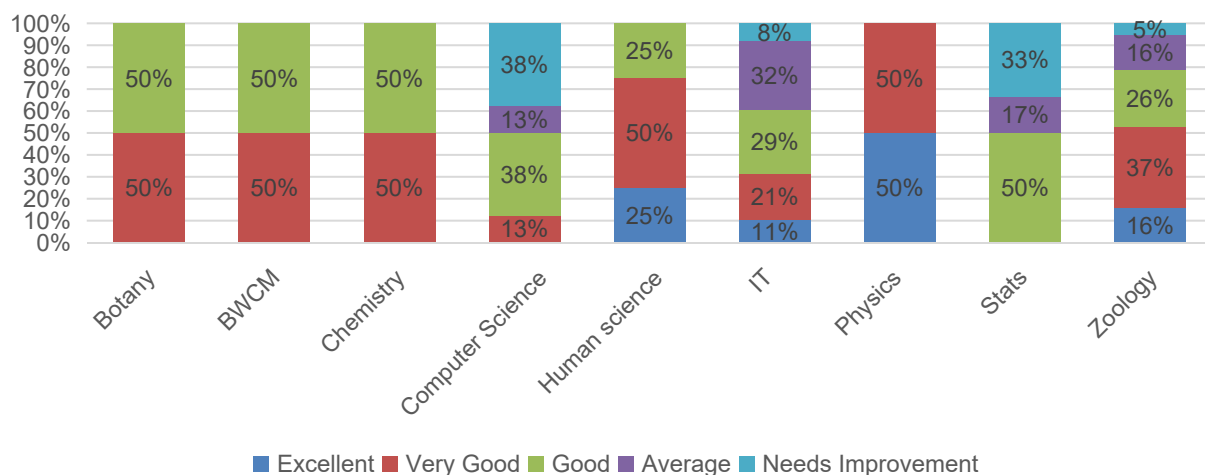
Key - Excellent, Very Good, Good, Average & Needs Improvement

Employer's feedback related to Syllabus 2022-23

4. Incorporation of industry relevant topics



5. Incorporation of recent advancements



6. Useful for proficiency



Key - Excellent, Very Good, Good, Average & Needs Improvement