

# VPM's B.N.BANDODKAR COLLEGE OF SCIENCE (AUTONOMOUS), THANE

## DEPARTMENT OF HUMAN SCIENCE

### 1.4.1 FEEDBACK ANALYSIS RELATED TO SYLLABUS 2022-23

#### STAKEHOLDERS


- STUDENTS - Current Students found FYBSc, SYBSc and TYBSc Syllabi good with respect to almost all parameters.
- TEACHERS - All of the Teachers marked all syllabi as good in many parameters but some teachers found SYBSc and TYBSc syllabi as average with respect to suitability for job demands, employability, skill development and entrepreneurship.
- ALUMNI - Alumni of Human Science found the overall syllabi Very good but some students found it good in terms of employability, Entrepreneurship & skill development
- EMPLOYER - Partly of Employers found Human Science found syllabi excellent in skill development, Industry relevant topics but Good in content of syllabi & employability

### 1.4.2 ACTION PLAN REPORT RELATED TO FEEDBACK ANALYSIS OF SYLLABUS 2022-23

- In order to enhance job potential, newly introduced syllabi will be framed involving more skill based learning modules
- Novel certificate course/s will be initiated by the Department with entrepreneurship perspective.
- In order to enhance employability Internship Programs, will be framed for last year degree students.

  
I/C Principal



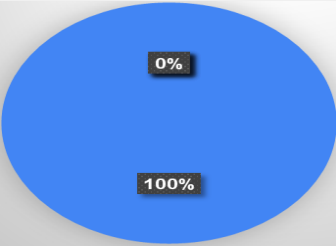
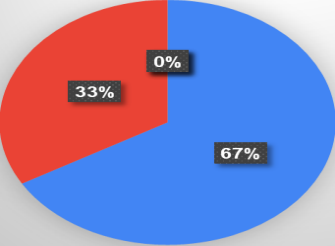
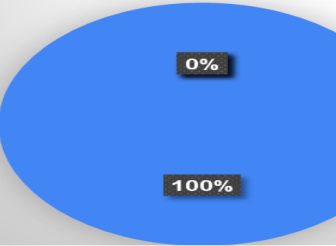
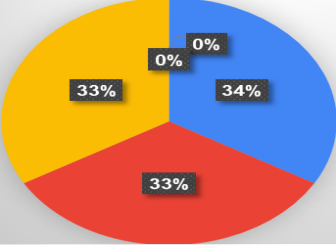
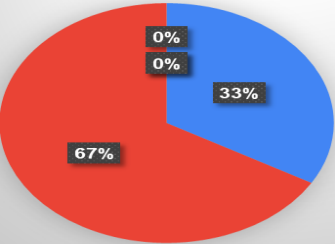
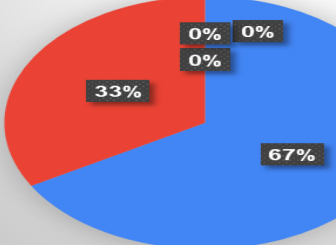
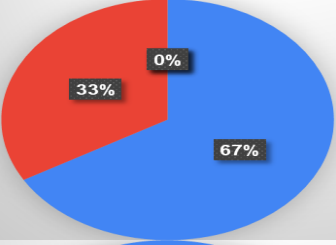
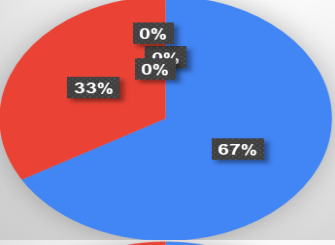
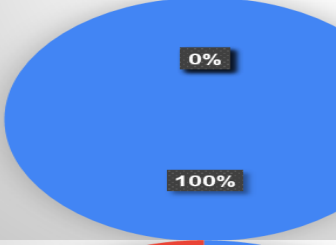
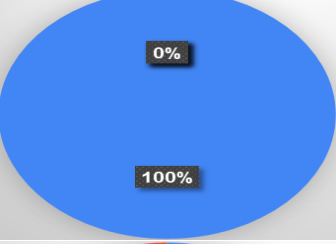
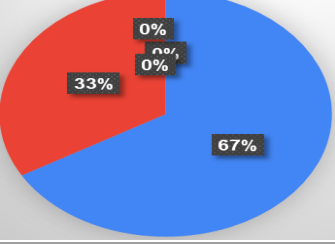
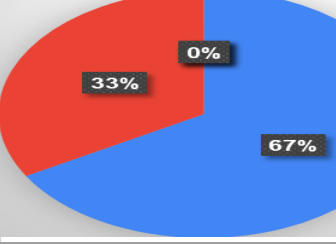
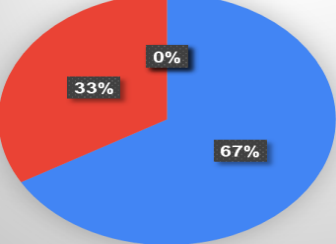
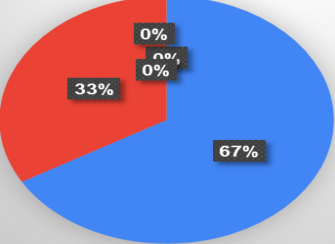
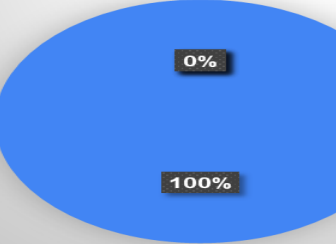
  
InCharge Dept. of Human Science

# UG-Student's feedback related to Syllabus 2022-23

Parameter	FYBSc	SYBSc	TYBSc
1.Design & Content of syllabus			
2.Balance between Theory-Practical/Tutorial			
3.Innovativeness			
4. Knowledge Acquired			
5.Useful for Career			
6. Significant Suggestions	NIL	NIL	NIL

Key - Excellent, Very Good, Good, Average & Needs Improvement

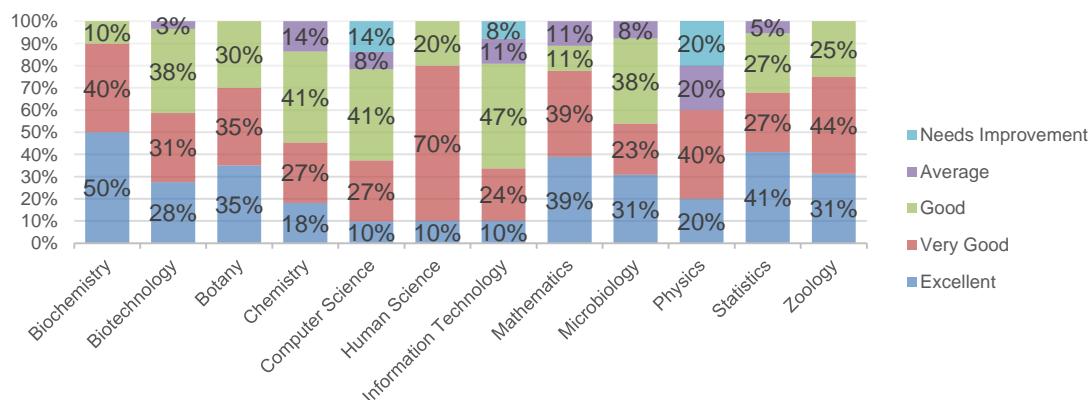
# UG-Teacher's feedback related to Syllabus 2022-23

Parameter	FYBSc	SYBSc	TYBSc
1.Design & Content of syllabus			
2.Availability of Sufficient References			
3. Suitability for setting question paper			
4. Suitability for both slow & fast learners			
5.Suitability for employability/ entrepreneurship/ skill development			
6.Significant Suggestions	Skill enhancement course need to be added	Employability enhancement course need to be added	Internships should be incorporated

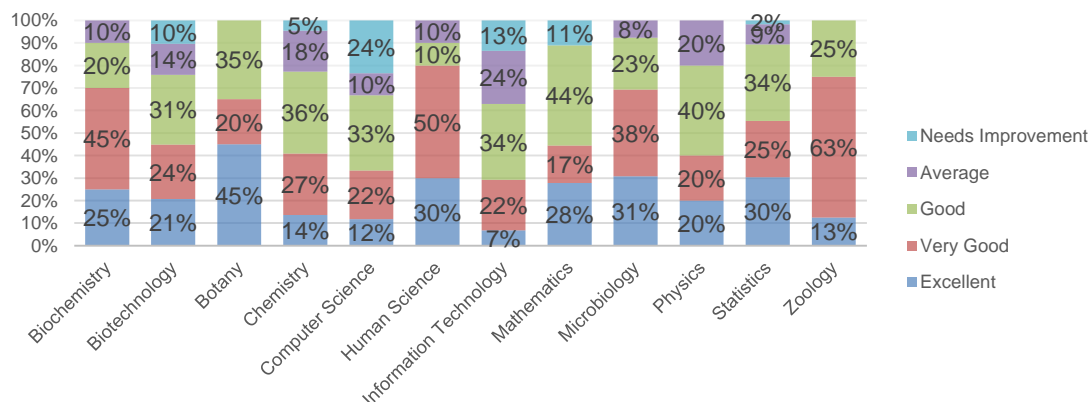
Key - Excellent, Very Good, Good, Average & Needs Improvement

# UG-Alumni feedback related to Syllabus 2022-23

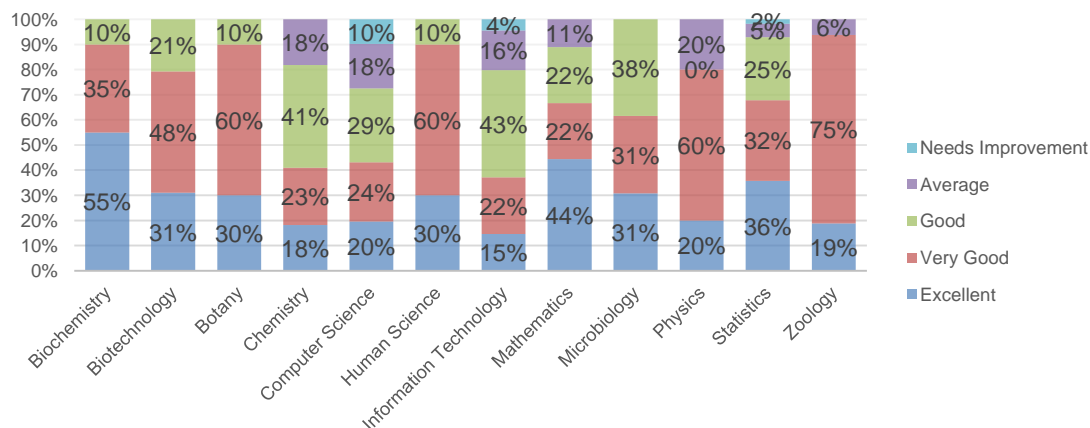
## 1.Design & Content of syllabus



## 2. Innovativeness in syllabus



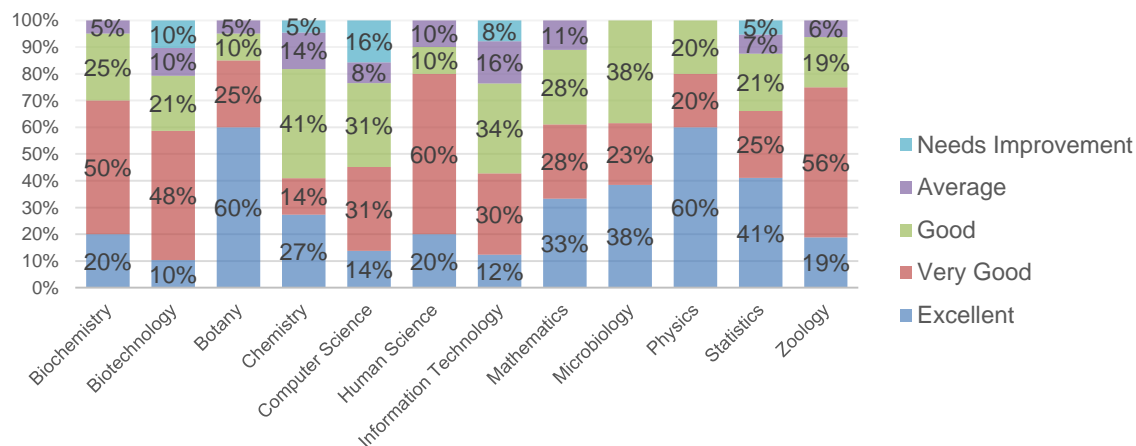
## 3. Knowledge Acquired through syllabus



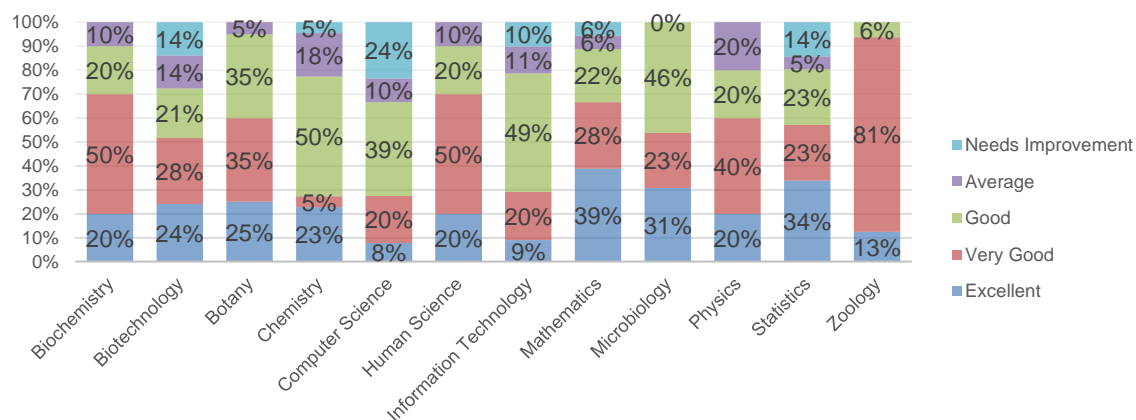
Key - Excellent, Very Good, Good, Average & Needs Improvement

# UG-Alumni feedback related to Syllabus 2022-23

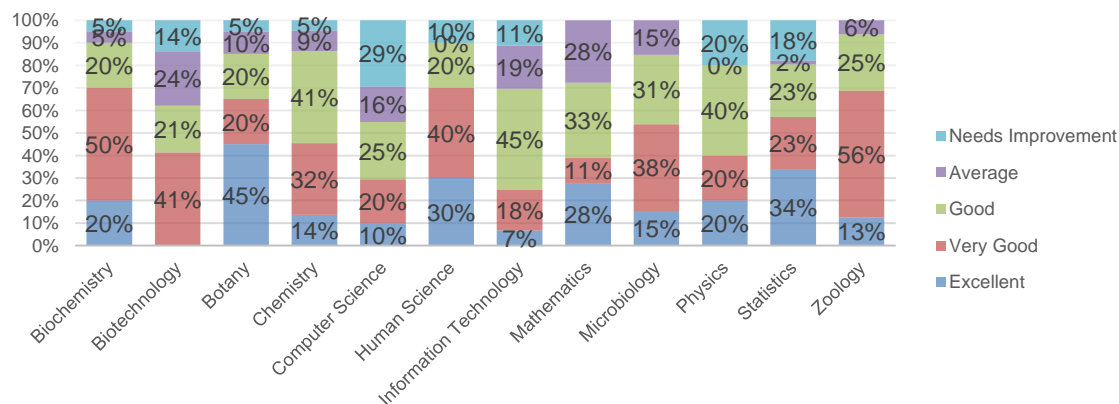
## 4. Topics on environmental sustainability, gender equality, human values and professional ethics



## 5. Suitability for developing employability/ entrepreneurship/ skill development



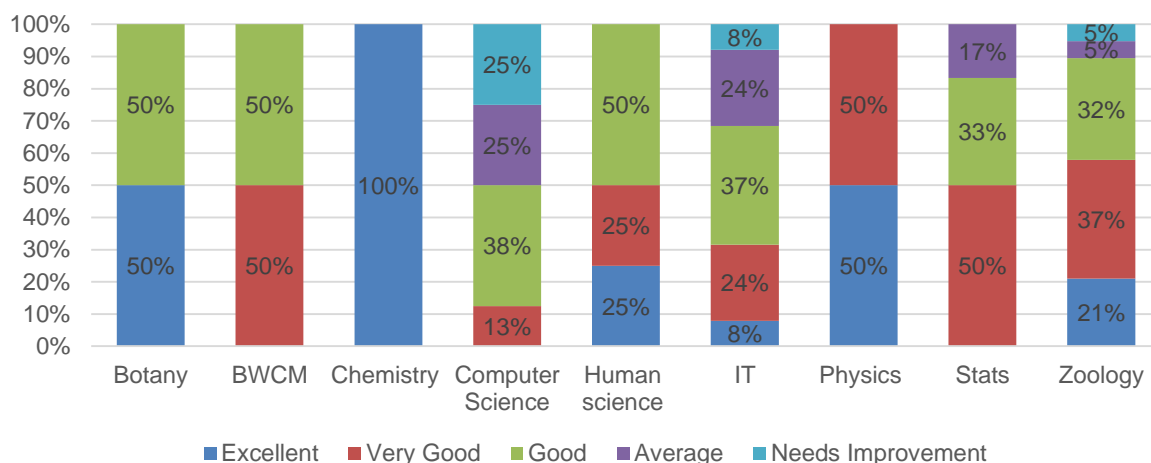
## 6. Suitability for local needs/ job demands



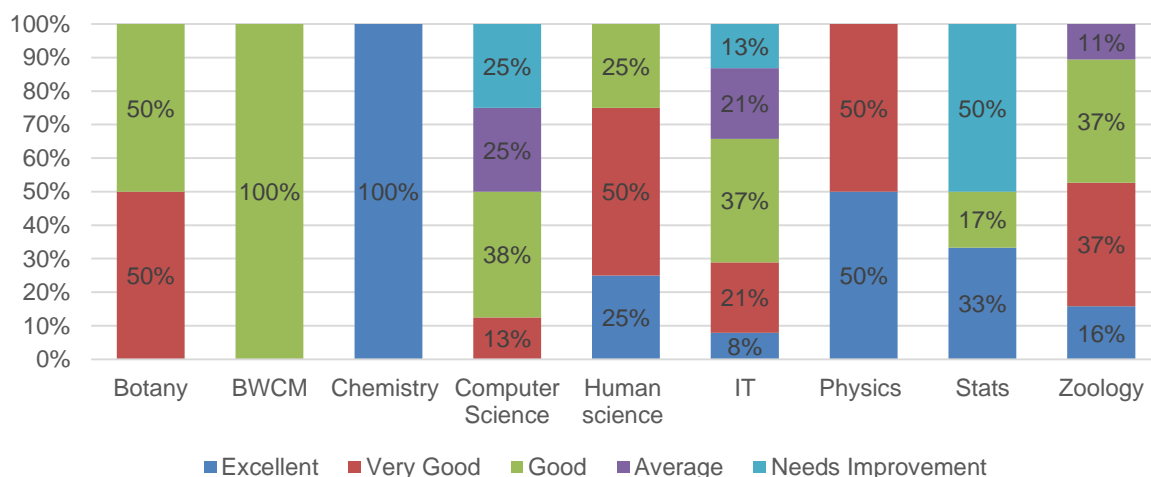
Key - Excellent, Very Good, Good, Average & Needs Improvement

# Employer's feedback related to Syllabus 2022-23

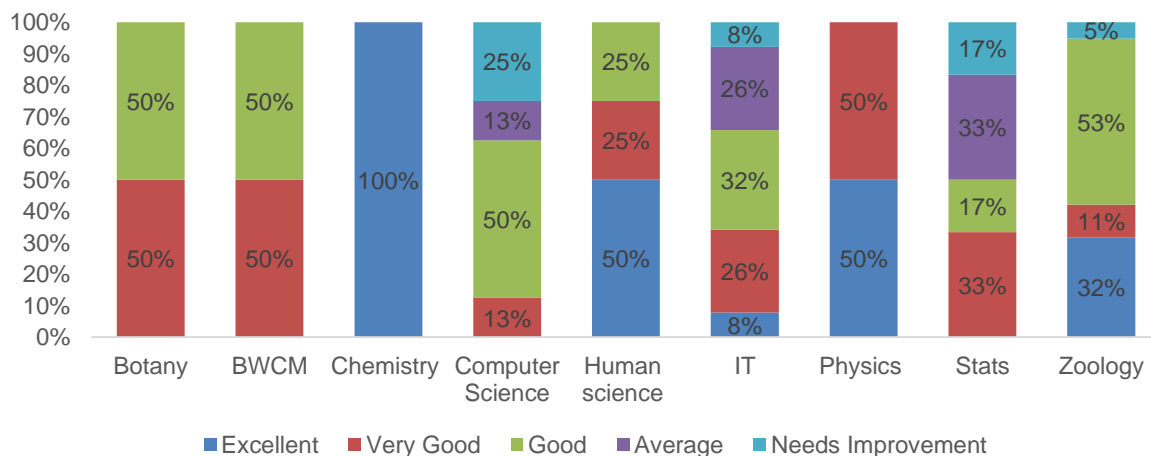
## 1.Design & Content of syllabus



## 2. Compatibility in procuring employment/ entrepreneurship



## 3. Compatibility in procuring skill development

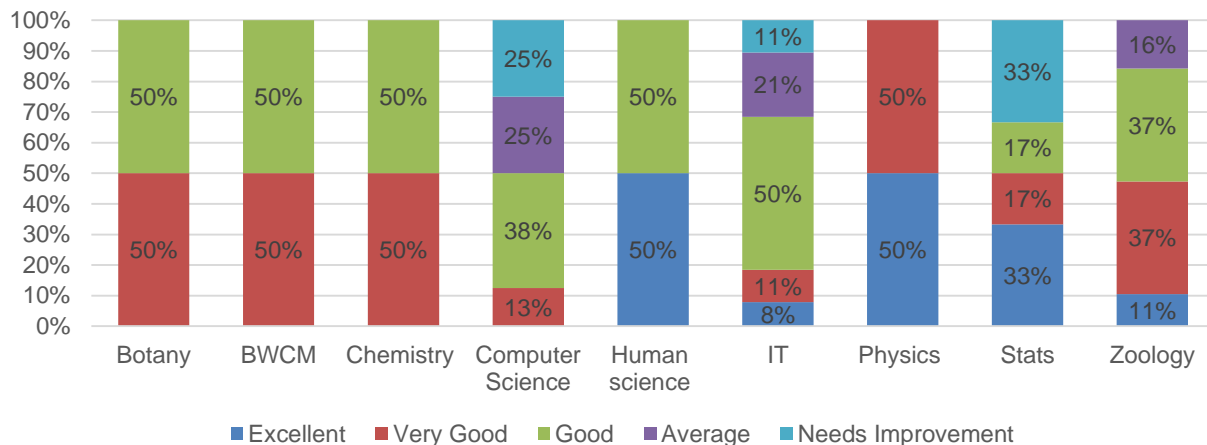


Key - Excellent, Very Good, Good, Average & Needs Improvement

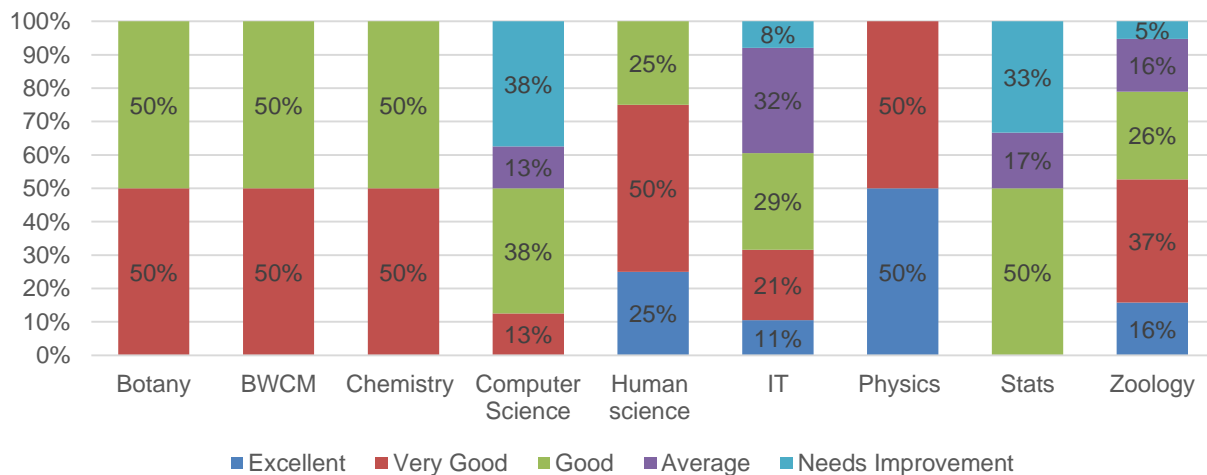


# Employer's feedback related to Syllabus 2022-23

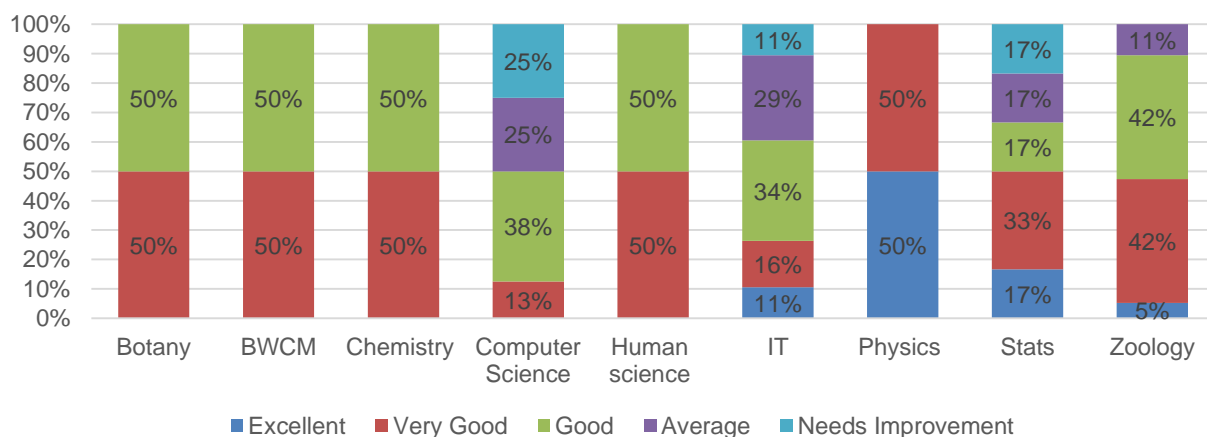
## 4. Incorporation of industry relevant topics



## 5. Incorporation of recent advancements



## 6. Useful for proficiency



Key - Excellent, Very Good, Good, Average & Needs Improvement